

# PRID<sup>®</sup> DELTA

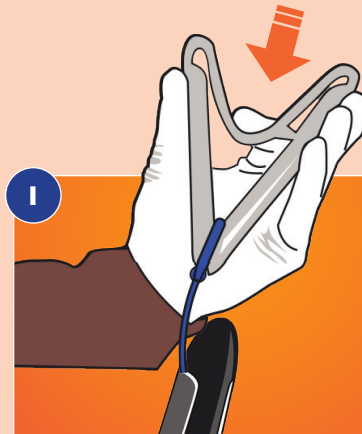
## DIRECTIONS FOR USE

### 5 MINUTES BEFORE INSERTION

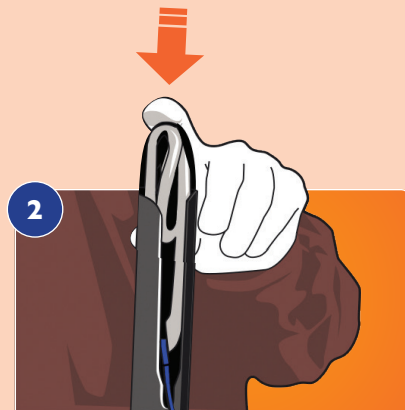
Clean and disinfect the applicator in a non-irritant antiseptic solution such as:

- ▶ Chlorhexidine
- ▶ Povidone iodine
- ▶ Quaternary Ammonium

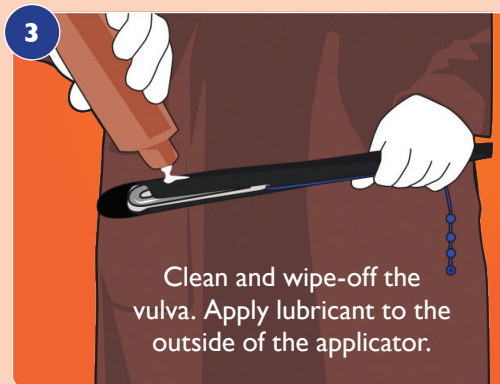
#### ANTISEPTIC SOLUTION



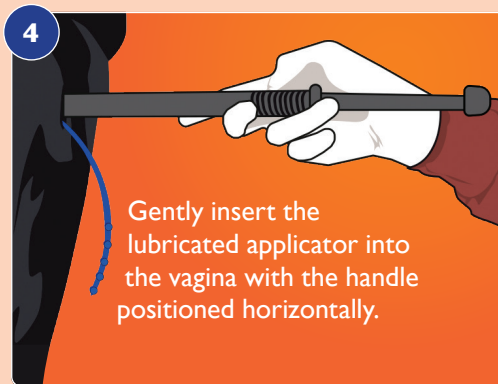
1 Wearing gloves, fold the PRID<sup>®</sup> DELTA before inserting it into the applicator.



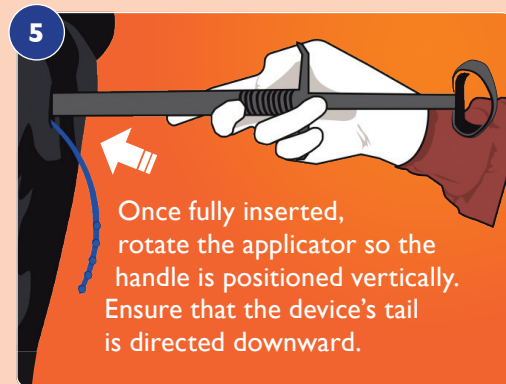
2 Push the device into the applicator up to the end. Be sure that the rigid tail extends along the outside of the applicator.



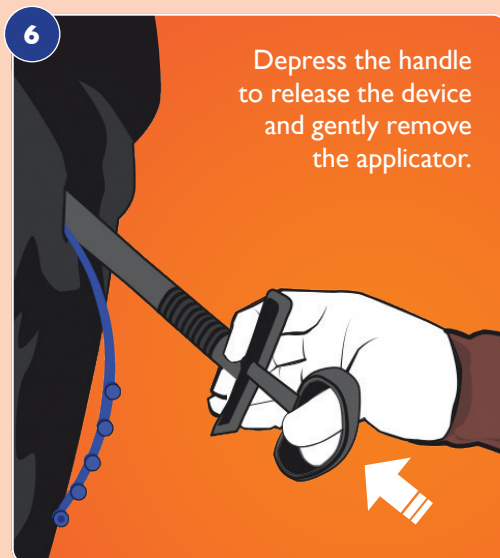
3 Clean and wipe-off the vulva. Apply lubricant to the outside of the applicator.



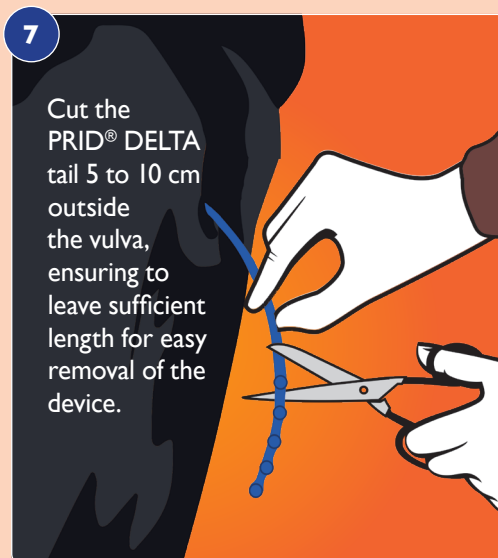
4 Gently insert the lubricated applicator into the vagina with the handle positioned horizontally.



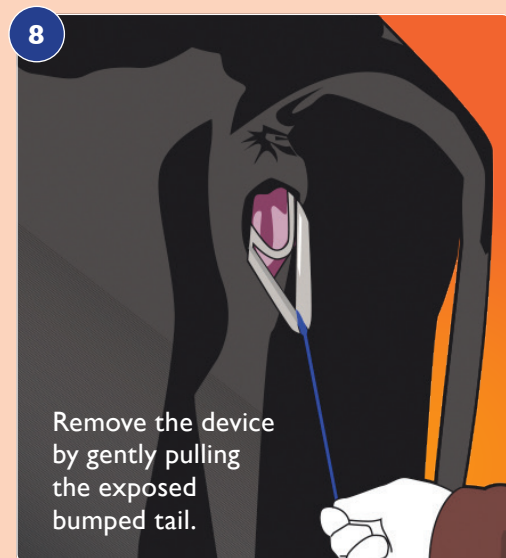
5 Once fully inserted, rotate the applicator so the handle is positioned vertically. Ensure that the device's tail is directed downward.



6 Depress the handle to release the device and gently remove the applicator.



7 Cut the PRID<sup>®</sup> DELTA tail 5 to 10 cm outside the vulva, ensuring to leave sufficient length for easy removal of the device.



8 Remove the device by gently pulling the exposed bumped tail.

CONTACT YOUR VETERINARIAN OR YOUR CEVA REPRESENTATIVE FOR MORE INFORMATION